



Collaboration & Partnership Strategies for Implementing Home Visiting Program: Examples through the Early Childhood Comprehensive Systems (ECCS) Grant in Washington State

Lorrie Grevstad, RN, MN

U.S. Department of Health and Human Services (DHHS)

Health Resources and Services Administration (HRSA)

Maternal and Child Health Bureau (MCHB)

ECCS Overview

Statewide effort to support:

- Child well-being (whole child)
- Healthy development of young children
- School readiness and success

Project Goals

- Facilitate the development of a comprehensive early childhood system
- Clarify the role of 'health' in early childhood systems



Required Components

- Access to health insurance & a medical home
- Support for mental health & social/emotional development
- Quality child care and early childhood education
- Parent education
- Family support



Kids Matter:

Improving Outcomes for Children in Washington State

A framework for building an early childhood system



Kids Matter Framework: A Tool To...

- Bring together people and organizations with common goals
- Reduce fragmentation of systems and services
- Provide policy guidance to decision-makers
- Contribute to strong programs, services, schools, and communities

Kids matter was developed under the following tenets:

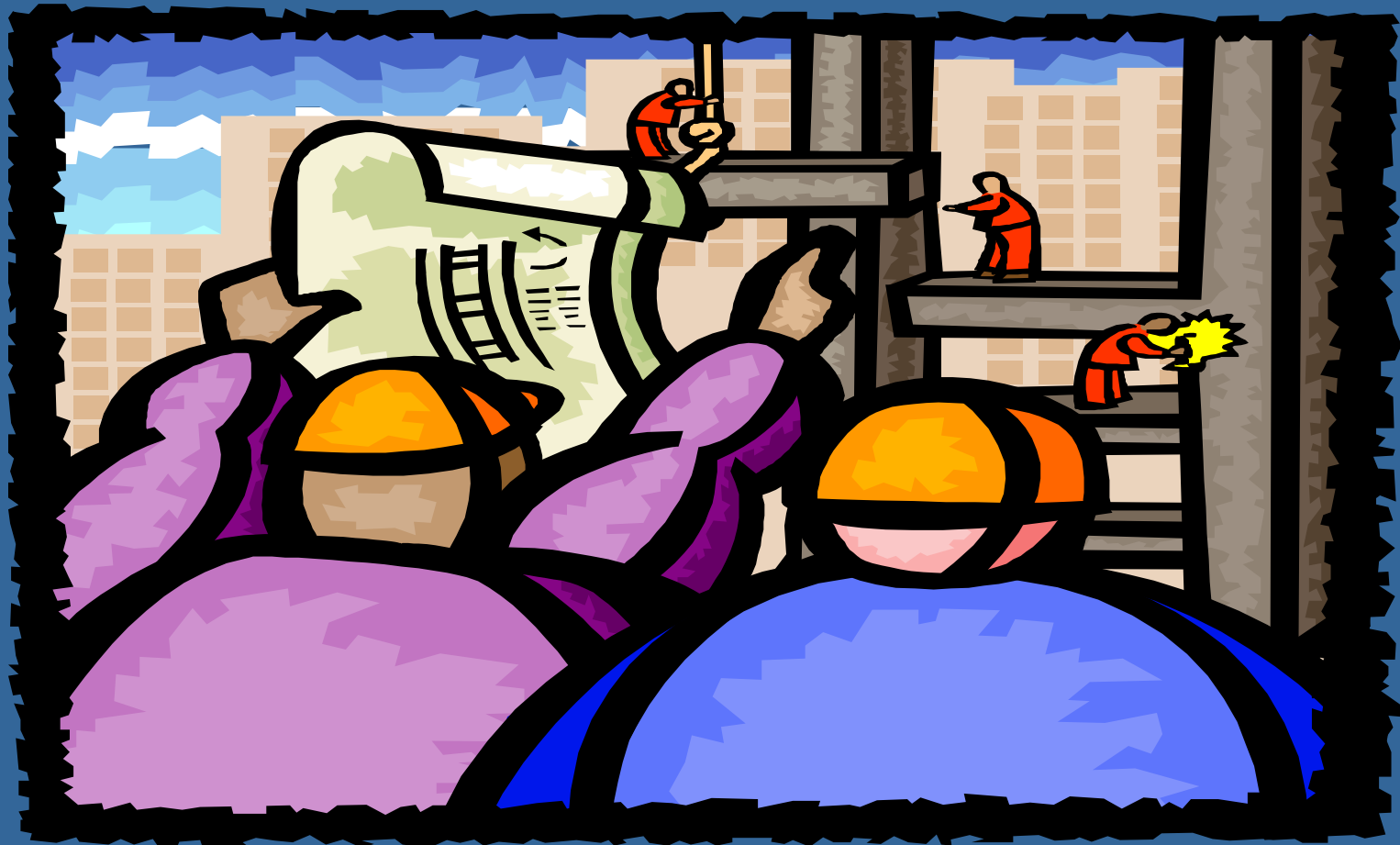
- Joint system building efforts built upon established plans
- Cross-system state agency participation
- Participatory community input from a broad constituency

Kids Matter: Hallmarks

- Approaches early childhood systems as a collaborative effort
- Serves as an over-arching bridge for a comprehensive framework
- Defines common goals and outcomes
- Outlines specific strategies and partners
- Focuses on accountability and evaluation of progress
- Systems Thinking approach that emphasizes the relationships among a system's parts



Create a Common Frame



Components of Comprehensive Early Childhood System

**ACCESS TO HEALTH INSURANCE
AND MEDICAL HOMES**



**SOCIAL, EMOTIONAL,
AND MENTAL HEALTH**



**PARENTING INFORMATION
AND SUPPORT**



**EARLY CARE AND EDUCATION/
CHILD CARE**



KIDS MATTER FRAMEWORK

INFRASTRUCTURE

Research and Resources:
Infrastructure In WA State:
Projects and Initiatives:

COMMUNICATION

Children's Web Hub
211 Information and
Referral Line

FUNDING

Leverage public/private resources to
move the early care and education
agenda

KEY RESOURCES

STRATEGIES

ACCESS TO HEALTH INSURANCE & MEDICAL HOMES

- Increase awareness among all who care for young children about the importance of comprehensive health care
- Enroll more eligible children in public health insurance programs (Medicaid, SCHIP, Basic Health, SS)
- Facilitate access to a Medical Home for all children (including medical, dental, mental health & vision services)
- Make developmental assessment & referral to Early Intervention (EI) accessible

SOCIAL, EMOTIONAL & MENTAL HEALTH

- Ensure that communications with all who work with young children emphasizing the importance of social, emotional & mental health
- Promote existing program's awareness & implementation of models of services & supports for young families that are effective, culturally competent & community-based
- Promote existing programs' awareness & implementation of practices that provide opportunities for social connectedness for families
- Promote caregivers' knowledge of social, emotional & mental health of young children
- Promote collaboration among policymakers, providers & other stakeholders

EARLY CARE AND EDUCATION/CHILD CARE

- Use Washington State Early Learning & Development Benchmarks as a tool to enhance the quality of early care & learning
- Improve the ability to evaluate & reward high-quality programs through development of Quality Rating system (QRS) & Tiered Reimbursement
- Promote children's health in early care & education programs (ongoing statewide collaborative effort: Healthy Children Care Washington - HCCW)
- Support high quality professional development services for caregivers
- Develop capacity within the early care & education systems to engage in family support
- Voluntary Universal Pre-K

PARENTING INFORMATION AND SUPPORT

- Provide information to parents & facilitate connection to needed services & supports
- Provide professional development programs, services & supports for professionals providing information & support to parents
- Strengthen & sustain the Washington Parenting Education Network (WAPEN)

SYSTEM CHANGES

- Increased number and percentage of children who have medical insurance

- Increased availability of appropriate and coordinated mental health services for children

- Increased number and percentage of child care & preschool programs that are quality rated
- Increased wages for quality child care providers
- Increased systems' recognition of families' role as the primary nurturer of their children
- The public sees early childhood education, health & school readiness as a major contributor of economic growth
- Increased ability for parents and caregivers to access community resources and support networks

- Increased availability of parent education resources & services

PARENT & CARE-GIVER CHANGES

- Increased understanding of the importance of comprehensive health care (including medical, dental, mental health & vision)
- Increased ability to recognize an emerging issue with their child's health or development and connect with appropriate services

- Improved understanding and practice of nurturing behaviors to promote children's optimal social-emotional development and mental health

- Increased understanding of what children need for optimal health & development (physical, social-emotional, cognitive & language)

- Increased stress-reduction skills
- Increased knowledge & skills to support children's health & development

CHILD CHANGES

- Increased number and percentage of children that receive recommended preventive care (e.g., well-child, immunizations)
- Increased number and percentage of children who have access to comprehensive health care (including medical, dental, mental health, vision)

- Increased number and percentage of children entering kindergarten with social-emotional skills

- Increased number and percentage of children entering kindergarten healthy & ready for school, including: 1) physical well-being, health & motor development; 2) social & emotional development; 3) approaches toward learning; 4) cognition & general knowledge; and 5) language, communication & literacy

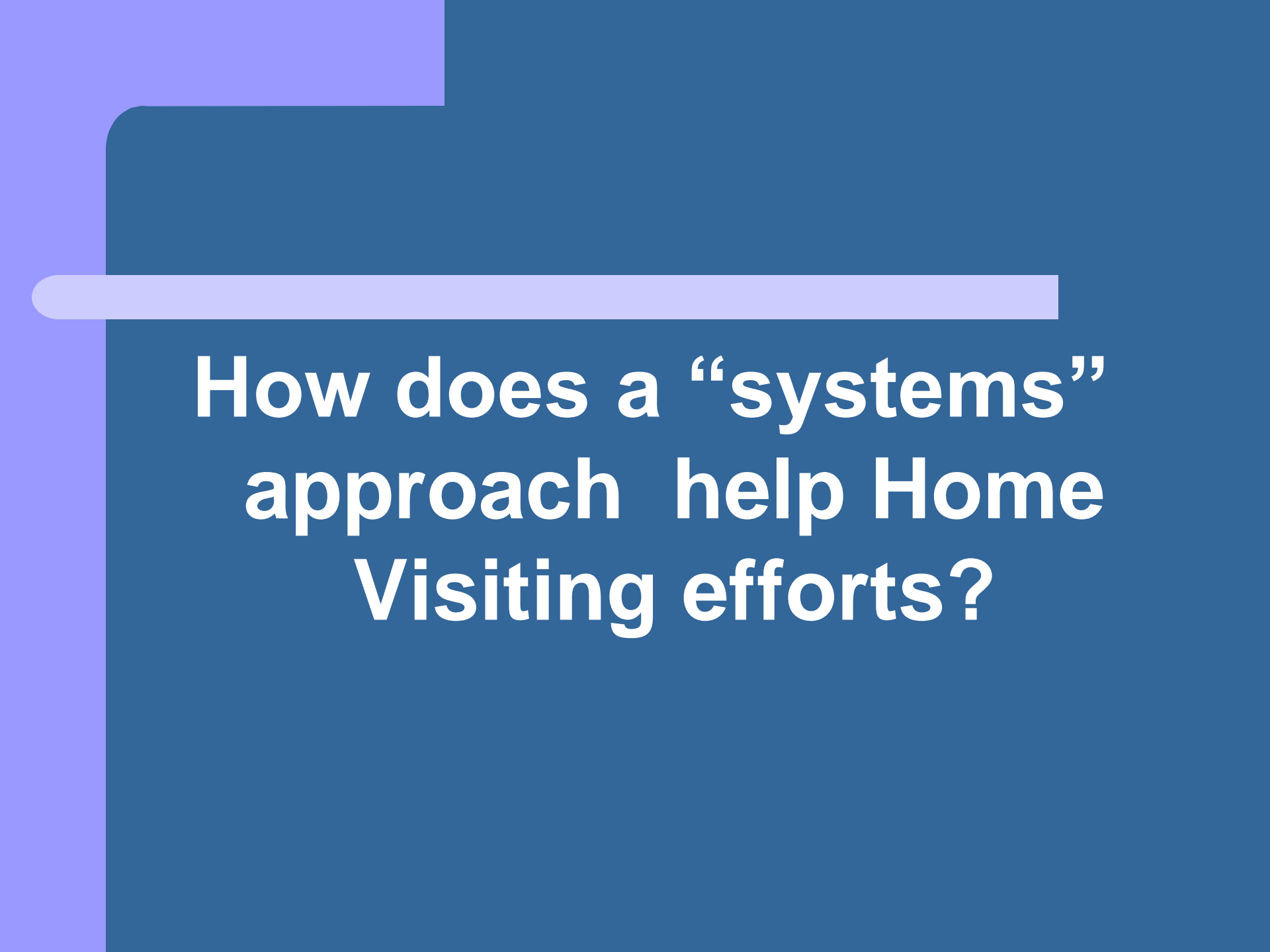
- Increased number and percentage of children who live in safe, stable & supportive families

GOAL

CHILDREN ARE HEALTHY AND READY FOR SCHOOL



Family Support approach, strategy, or outcome

The background consists of a dark blue field with a lighter purple vertical bar on the left side. A horizontal purple bar with rounded ends spans across the middle of the slide. The text is centered in white.

**How does a “systems”
approach help Home
Visiting efforts?**



“Layer Cake”

ECCS – “Layer Cake”

Program Plan

Program Logic Model

Program/Agency Specific Focus

Program/Agency Comparisons

ECCS Systems Framework/Outcome Map



How Home Visiting Contributes to Early Learning & School Readiness

Early Learning is about more than ABCs and 123s

- Cognitive
- Social/emotional
- Physical well-being and development
- Communication, language and literacy

Happens whenever, wherever a child is!

- At home
- In child care
- In preschool
- In the community

...Home Visiting is a strategy that supports all of these components of early learning



How ECCS Systems Approach Added Value

- Provided a conceptual framework for creating a more integrated, accessible EC system
- A 'big tent' for all who care for young children
- A way to focus collaborative efforts 'strategically'
- Brought together new public & private partners
- 30,000 ft. level – allowed for flexibility so programs, initiatives and agencies could use

Lessons Learned

- RELATIONSHIPS, RELATIONSHIPS, RELATIONSHIPS
- Build on existing efforts... & give them credit
- Start with the end in mind
- Aim high – 30,000 feet
- Frame high – a “picture” for big tent...

Potential Partners

- Dept. of Alcohol and Substance Abuse
- Developmental Disabilities
- Medical Assistance Administration
- Infant Toddler Early Intervention Program
- Mental Health Department
- State Child Care Resource & Referral Network
- Local Health Jurisdictions, Health Department
- Local Chapter of American Academy of Pediatrics
- Local Family Practice Association
- Child Abuse Prevention Agency
- Head Start/Early Head Start and Child Care
- Business and Philanthropy
- Other...

Contact Information

Lorrie Grevstad RN MN
Health Resources and Services Administration
Maternal Child Health Bureau
Region X, Seattle Division
206-615-3891
lgrevstad@hrsa.gov